

CriticalCareNurse

The journal for high acuity, progressive, and critical care

April 2011

• Volume 31, Number 2

Contents

Cover Article

▶ **CE**Continuing Education

Traumatic Brain Injury: Advanced Multimodal Neuromonitoring From Theory to Clinical Practice

Sandy Cecil, Patrick M. Chen, Sarah E. Callaway, Susan M. Rowland,
David E. Adler, and Jefferson W. Chen

page **25**

Cover illustration by Gary Chike



OnlineNOW

Abstract of an article available exclusively online at www.ccnonline.org page **16**

Napping During Night Shift: Practices, Preferences, and Perceptions of Critical Care and Emergency Department Nurses

Wendy M. Fallis, Diana E. McMillan, and Marie P. Edwards **e1**

Features

▶ **CE**Continuing Education

Evidence-Based Practice Habits: Putting More Sacred Cows Out to Pasture

Mary Beth Flynn Makic, Kathryn T. VonRueden, Carol A. Rauen, and Jessica Chadwick

page **38**

Modified Insertion of a Peripherally Inserted Central Catheter: Taking the Chest Radiograph Earlier

Geng Tian, Bin Chen, Li Qi, and Yan Zhu

page **64**

Use of Peripherally Inserted Central Catheters As an Alternative to Central Catheters in Neurocritical Care Units

Christi DeLemos, Judy Abi-Nader, and Paul T. Akins

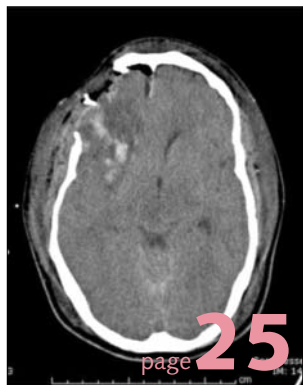
page **70**

CriticalCareNurse

The journal for high acuity, progressive, and critical care

April 2011

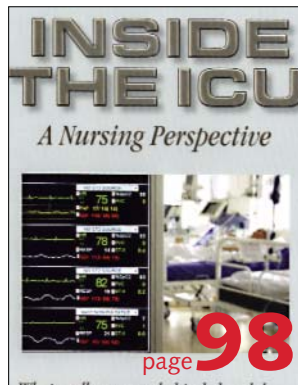
Volume 31, Number 2



Cover Article



Feature Article



Book Reviews



New Products

Columns

▶ CE Continuing Education

Trauma

Intraosseous Devices for Intravascular Access in Adult Trauma Patients page **76**

Michael W. Day

Academic Education

Incivility in Nursing: The Connection Between Academia and Clinical Settings page **92**

Susan Luparell

ONLINE
FIRST
from CCN

To read select CCN content before it appears in print, go to www.ccnonline.org and click on the OnlineFirst icon for a list.

OnlineFirst articles are copyedited, indexed, and citable.

Departments

Editorial

The Patient's Capacity for Self-Care: Advocating for a Predischarge Assessment page **10**

Ask the Experts

Turning Tube Feeding Off While Repositioning Patients in Bed page **96**

Also in This Issue

Contributors page **8**

Book Reviews page **98**

New Products page **100**

Education Directory page **102**

I Am a Critical Care Nurse page **104**

2011 Evidence Based Abstracts
(online only) **e12**

