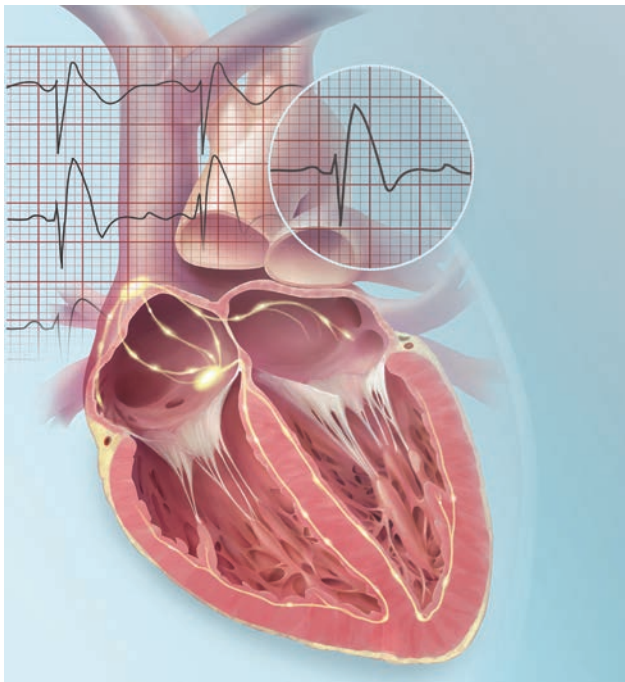


# CriticalCareNurse

The journal for high acuity, progressive, and critical care nursing



Cover illustration by Kimberly Martens

OCTOBER 2021 • VOLUME 41 NUMBER 5

CE

## Brugada Syndrome: Fatal Consequences of a Must-Not-Miss Diagnosis

L. Douglas Smith Jr, Sarah Gast, Danielle F. Guy

Page 15

OnlineNOW

## Chlorhexidine Gluconate Bathing Program to Reduce Health Care–Associated Infections in Both Critically Ill and Non–Critically Ill Patients

Leigh Chapman, Lisa Hargett, Theresa Anderson,  
Jacqueline Galluzzo, Paul Zimand

Page e1 (Page 12)

## Promoting Early Mobility in Patients After Transcatheter Aortic Valve Replacement: An Evidence-Based Protocol

Lindsey Hart, Robert Frankel, Gregory Crooke, Stefanie Noto,  
Mary Alice Moors, Bradi B. Granger

Page e9 (Page 12)

## The Beacon Collaborative: A Journey to Excellence

Deborah Hurley, Sarah M. Gantz, E. Kate Valcin, Tara L. Sacco

Page e17 (Page 12)

CCN FAST FACTS

## Tele-U to Tele-ICU: Telehealth Nursing Education

Page 40

## Targeted Temperature Management Protocol in a Pediatric Intensive Care Unit: A Quality Improvement Project

Page 51

*CRITICAL CARE NURSE* (ISSN 0279-5442, eISSN 1940-8250) is published bimonthly (February, April, June, August, October, December) by the American Association of Critical-Care Nurses (AACN), 27071 Aliso Creek Rd, Aliso Viejo, CA 92656. Telephone: (949) 362-2000. Fax: (949) 362-2049. Email: [ccn@aacn.org](mailto:ccn@aacn.org). Copyright 2020 by AACN. All rights reserved. *CRITICAL CARE NURSE* is an official publication of AACN. No part of this publication may be reproduced or transmitted in any form or by any means, electronic or mechanical, including photocopying, recording or by any information storage retrieval system without permission of AACN. For all permission requests, please contact the Copyright Clearance Center, Customer Service, 222 Rosewood Drive, Danvers, MA 01923, (978) 750-8400. The statements and opinions contained herein are solely those of individual contributors and not of the editor or AACN. The editor and AACN assume that articles emanating from a particular institution are submitted with the approval of the requisite authority, including all matters pertaining to human studies and patient privacy requirements. Advertisements in this journal are not a warranty, endorsement, or approval of the products by the editor or AACN, who disclaim all responsibility for any injury to persons or property resulting from any ideas or products referred to in articles or advertisements.

Individual subscriptions (print and online): US, \$39; outside of US, US\$85. Institutional rates (print and online): US, \$555; outside of US, US\$735. Institutional rates (print only): US, \$395; outside of US, US\$560. Institutional rates (online only): US, \$365; outside of US, US\$365. Single copies and back issues: US, \$50; outside of US, US\$60. Fax requests to *CCN* Back Issues at (949) 362-2049 or write to *CCN*, 27071 Aliso Creek Rd, Aliso Viejo, CA 92656, or phone (800) 899-1712. Prices on single copies or bulk reprints of articles are available on request from AACN at (949) 362-2050, ext 532. For membership and subscription questions: call (800) 899-2226 or (949) 362-2000 or email [info@aacn.org](mailto:info@aacn.org); for institution subscription questions, call (800) 336-6348 or (818) 487-2075 or email [criticalcarenurse@pubservice.com](mailto:criticalcarenurse@pubservice.com).

Printed in the USA. Periodicals postage paid at Laguna Beach, Calif, and additional mailing offices. Postmaster: Send address changes to *CRITICAL CARE NURSE*, 27071 Aliso Creek Rd, Aliso Viejo, CA 92656. Allow 4 to 6 weeks for change to take effect. For subscription questions please call toll-free: AACN members, (800) 899-2226 or (949) 362-2000; nonmembers, (800) 336-6348 or (818) 487-2075.

The name and title *CRITICAL CARE NURSE* are protected through a trademark registration in the US Patent Office. *CRITICAL CARE NURSE* is indexed in Cumulative Index to Nursing & Allied Health Literature (CINAHL), MEDLINE/PubMed, Scopus, and ISI Alerting Services.



**HEALTHY WORK ENVIRONMENTS**

**Nurse Managers Leading the Way:  
Reenvisioning Stress to Maintain  
Healthy Work Environments**

Kimberly Dimino, Amy E. Learmonth,  
Christiam C. Fajardo

Page **52**

**NEUROLOGICAL CARE**

**Increasing the Effectiveness of Targeted  
Temperature Management**

Melissa Moreda, Pamela S. Beacham,  
Angela Reese, Malissa A. Mulkey

Page **59**

**DEPARTMENTS**

**EDITORIAL**

**Does Nursing Need a Brand?**

Annette M. Bourgault, Editor

Page **8**

**CERTIFICATION TEST PREP**

**Yes Is No**

Sara Knippa, Christina Goetter, Jennifer Popies

Page **64**

**ASK THE EXPERTS**

**The Importance of Nurse Well-being and  
How to Achieve It**

Marian Altman, Sarah Delgado

Page **69**

**IN OUR UNIT**

**Safety Champions: An Innovative Role  
During an Evolving Pandemic**

Erica Djen, Caroline Given, Tamarie O'Connor,  
Katrine Murray, Michelle Rodriguez, Taline Marcarian

Page **72**

**Awake Self-Prone Positioning:  
Implementation During the  
COVID-19 Pandemic**

Karen A. Allicock, Danielle Coyne, Anna N. Garton,  
Erin C. Hare, Maureen A. Seckel

Page **23**

**Tele-U to Tele-ICU:  
Telehealth Nursing Education**

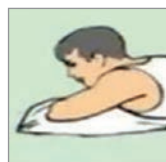
Nicole Ann Gibson, Robin Arends, Lori Hendrickx

Page **34**

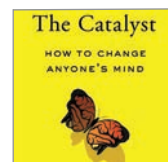
**Targeted Temperature  
Management Protocol in a  
Pediatric Intensive Care Unit:  
A Quality Improvement Project**

Erica Prendergast, Kiona Y. Allen, Michele Grimason Mills,  
Thomas Moran, Z. Leah Harris, Marcelo Malakooti, Craig M.  
Smith, Mark S. Wainwright, Maureen McCarthy-Kowols

Page **41**



Page 23



Page 76



Page 80

**ALSO IN THIS ISSUE**

**Contributors**

Page **6**

**OnlineNOW Abstracts**

Page **12**

**Book Reviews**

Page **76**

**Education Directory**

Page **79**

**Practice Pointers**

Page **80**